



**SafeCAM**

# Hot-stick friendly insulated camera case

**sicame**  
NORTH AMERICA

# About us

**sicame**  
GROUP

Sicame Group is one of the key players in the electrical equipment business worldwide. It has been able to adapt and develop to support the continuous evolution of electricity infrastructure in France and around the world, and become the largest independent entity in its sector.

A true player in the energy transition, it offers its customers new products and services to improve energy efficiency, deal with environmental risks and support the development of electric vehicle and solar power plant markets.

70

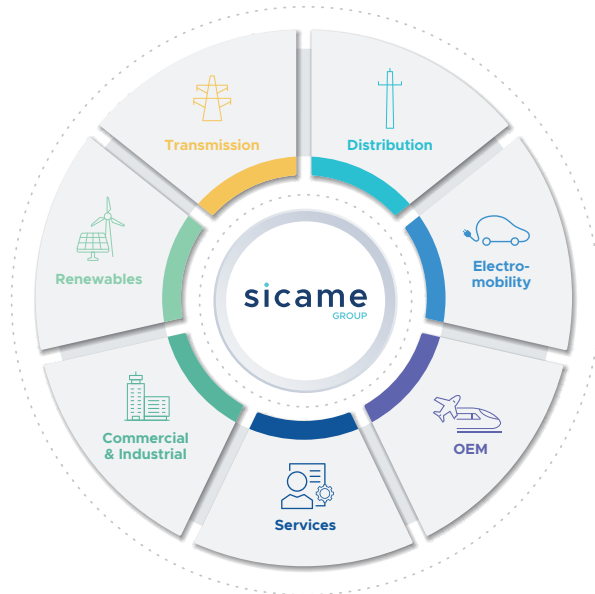
years of worldwide success

600 M€

2024 turnover

3,600

employees



## Our fields of activity

Sicame Group is specialised in **products and services** related to transmission and distribution of **electrical energy**, renewables, electro-mobility, safety equipment and industrial applications.

5 continents

26 countries

50 companies  
around the world

Products distributed  
in 157 countries



With decades of history and recognized expertise, our Transmission and Distribution division is specialized in designing, manufacturing and producing comprehensive ranges of products and plays a pivotal role in the supply of power across the world. Our team of engineers, planners, and environmental specialists is committed to building a safer, smarter 21st-century energy grid. By advancing safety and monitoring solutions, we are helping shape a sustainable future.



**Insulated case for inspection camera**

- \* Transparent front base
- \* Red rear base with foam and silicone gasket
- \* Opening / closing latch
- \* Screw for the hotstick adapter
- \* Adapter for hotstick
- \* Camera support + foam
- \* Silicone gasket
- \* Headlamp support

# Introduction

Thank you for purchasing the SafeCAM isolated housing for GoPro and other compatible action cameras (see 6-17, 12). The SafeCAM housing is insulated up to 350 kV, allowing you to inspect your power lines without harming the camera.



The SAFECAM-L-C-01 case contains the following items:

## SAFECAM-L-C-01



Case TPC009 Drxcase



GoPro Hero 4K



Standard Accessories: GoPro 4K



Pre-assembled insulated housing



USB



2 Stabilisation froks

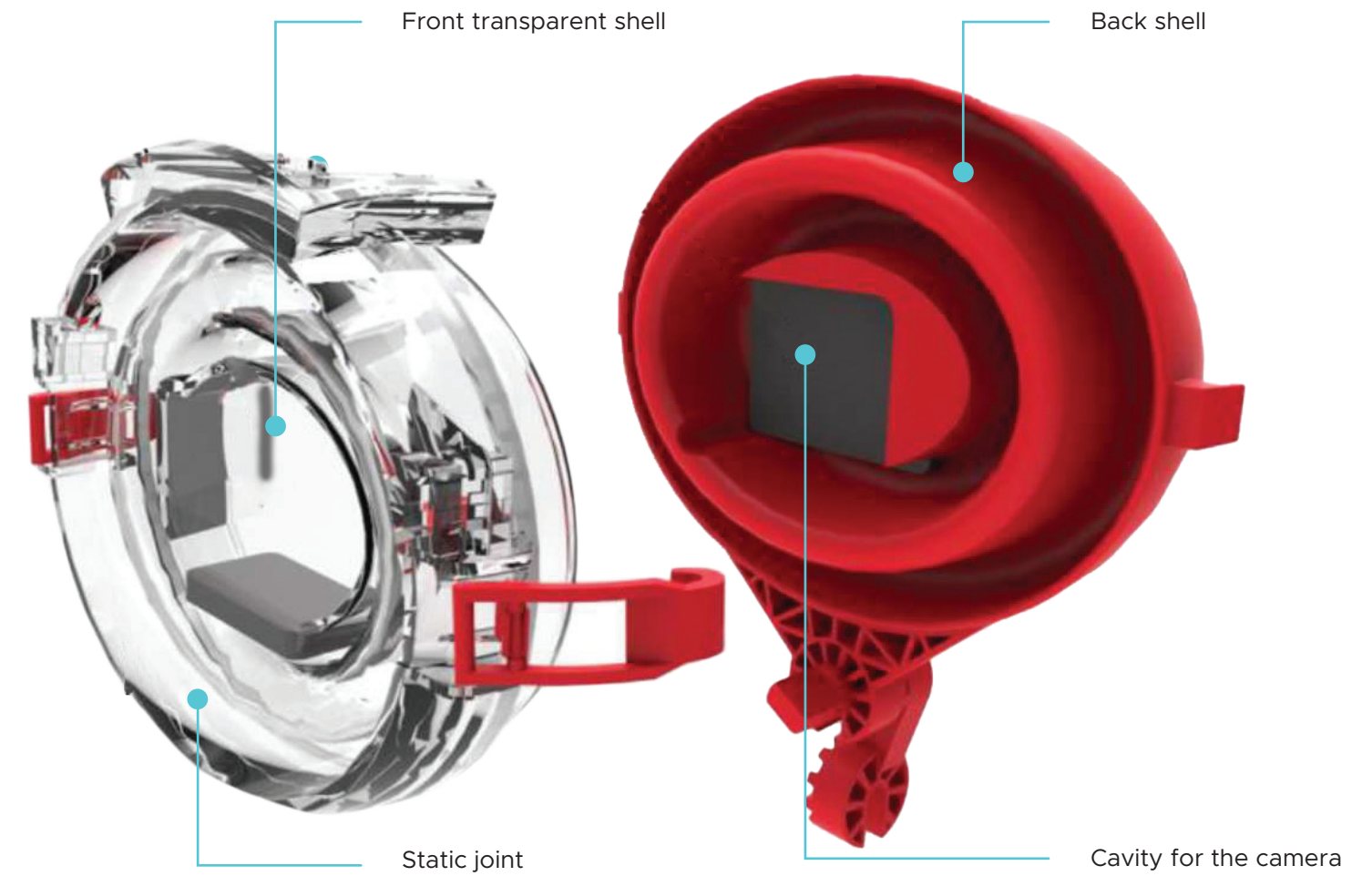
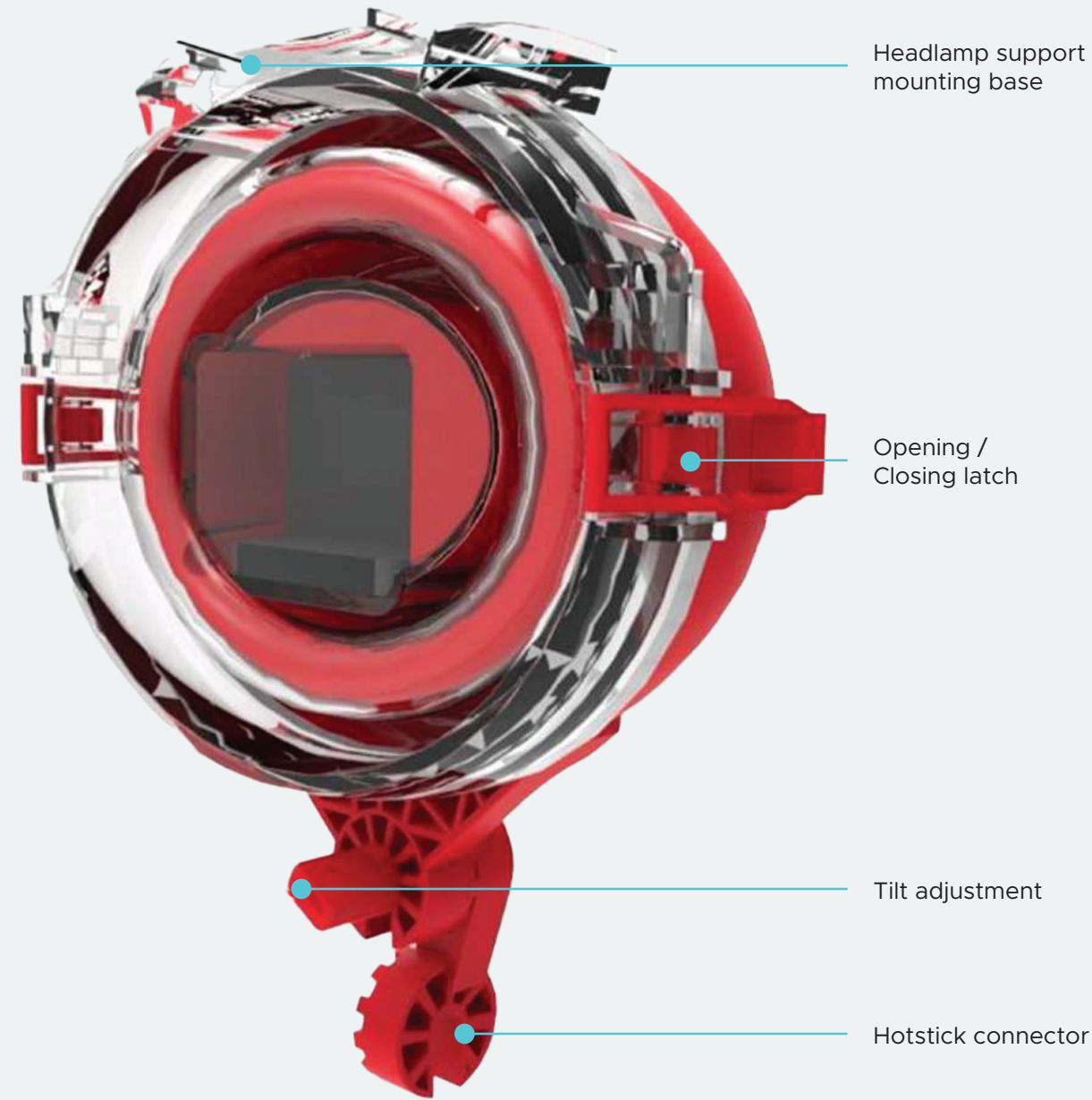


Headlamp support (headlamp sold separately)



32GB SD card

# SafeCAM



## Summary of test results

| Test                                  | Referential chapter | Sanction          |
|---------------------------------------|---------------------|-------------------|
| Voltage presence tests on SafeCAM box | PE-SAFECAM-HT-01    | Satisfactory test |

## Voltage presence tests on SafeCAM box

| Product | Voltage (kV) | % Initial battery | Duration (min) | % Final battery | Observation   |
|---------|--------------|-------------------|----------------|-----------------|---|
| 22-14/1 | 200          | 63                | 1              | 58              | No communication problems between the camera and the phone.<br>No change in image quality, no image freezing and no image loss. |
|         | 250          | 69                | 1              | 66              |   |
|         | 300          | 66                | 1              | 62              |   |
|         | 350          | 66                | 1              | 62              |   |
| 22-14/2 | 200          | 97                | 1              | 92              | At the end of the tests the cameras are always connected to the smartphone and the battery charging is possible.                |
|         | 250          | 97                | 1              | 94              |   |
|         | 300          | 97                | 1              | 94              |   |
|         | 350          | 99                | 1              | 95              |   |
| 22-14/3 | 200          | 35                | 1              | 31              |   |
|         | 250          | 31                | 1              | 28              |   |
|         | 300          | 33                | 1              | 33              |   |
|         | 350          | 30                | 1              | 26              |   |

## Accessories



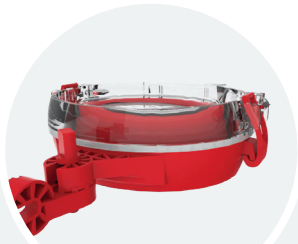
Headlamp



Stabilization forks

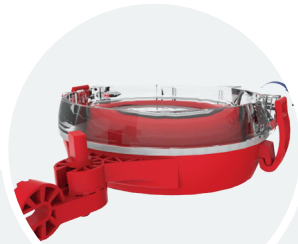
# Insulated housing for action camera

1



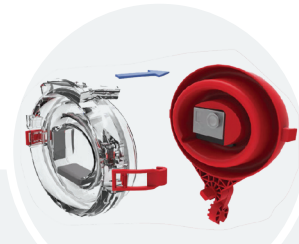
Place the front cover face-up. Lay the rear cover flat down on something soft so it does not scratch.

2



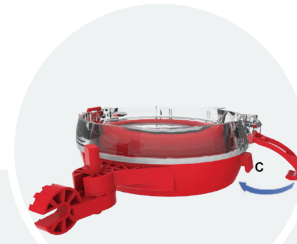
Place your fingertips to pull the latch (A) outward and unlock it from the front cover.

7



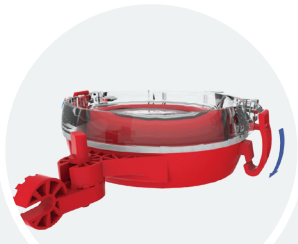
Replace the front cover on the rear cover.

8



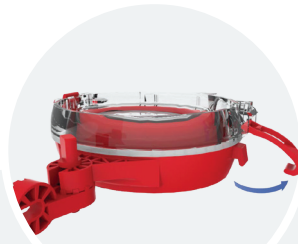
Replace the latch into the lock slot (C).

3



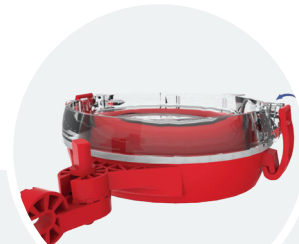
Lower the latch.

4



Once unlocked, raise part of the latch (B) toward the outside. Reproduce the previous steps with the other latch.

9



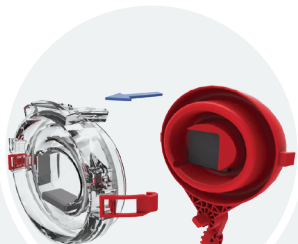
Swivel the latch upward and press it firmly inward in order to lock the SafeCAM. Reproduce the previous steps with the other latch.

10



Insert the screw of your hotstick into the connector and screw it into the hotstick end fitting.

5



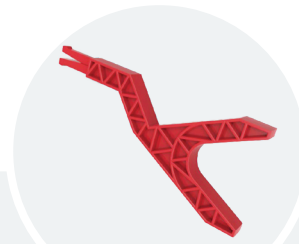
Be careful to lift the latches correctly, then separate the front cover from the rear cover.

6



Turn the camera on and put it in the camera compartment of the SafeCAM. Make sure that the camera is placed safely.

11



For additional stability, insert forks for stabilization into the dedicated slots.

12



Place the SafeCAM close by the area to be inspected and view the live camera images by using your smartphone, connected via wifi\*. The forks allow images to be recorded with optimal stabilization and a high clarity.



Sicame Group

+33 (0)5 55 73 89 00  
1 boulevard Marius Vivier Merle, 69003 Lyon, France

● [sicame-group.com](https://www.sicame-group.com)

**Sicame North America**  
[sicame-north-america.com](https://www.sicame-north-america.com)

+1 866-457-4830  
[info@sicamena.com](mailto:info@sicamena.com)

1674 Frontenac Rd, Naperville  
IL 60563, United States of America

